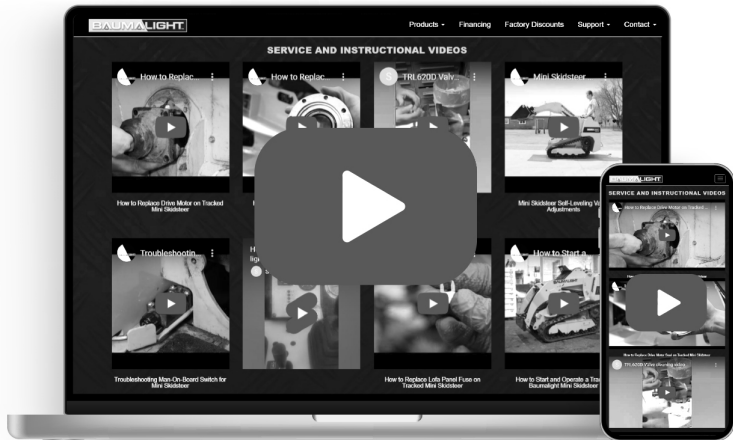


# **BAUMALIGHT™**

## **FBS752 Feller Buncher**

### **OPERATOR'S MANUAL**

Issue Date: February 2024



## Service And Instructional Videos

Find online at  
[baumalight.com/support](http://baumalight.com/support)

Following is a list of videos and documents available on Baumalights website and also on YouTube to help and enhance maintaining the feller buncher. The list below was current at the time this manual was issued. Additional content may be available.

Activity ID Number	Activity Name	Description	Item Available
86	Inserting Pin In 8 And 14 Pin Connector.	Changing Pins In Aux Receptacle.	Video
206	Replacing Teeth.	When To Replace B8000 Teeth.	Video
212	Auto Regen Valve.	Auto Regen Valve Exploded View.	Document
269	Skidsteer Case Drain Back-Pressure	What May Cause Skidsteer Case Drain Back-Pressure.	Video
270	Skidsteer Case Drain Back-Pressure	Testing Case Drain Back-Pressure With Pressure Gauge.	Video
271	Skidsteer Case Drain Back-Pressure	Testing Case Drain Back-Pressure With Open Coupler.	Video
312	Hydraulic Motor	Breaking In Replacement Hydraulic Motor.	Video
102	Remove Seal.	Remove Seal On Motor Or Load Adapter.	Video
120	Zero-Leak Relief Valve.	Demonstrating And Troubleshooting Zero-Leak.	Video
137	Replace Motor Shaft Seal.	Replace Shaft Seal On Piston Motor.	Video
160	Valve Adjustment.	Adjusting Grabber Arm Speed.	Video

# TABLE OF CONTENTS

<b>1 INTRODUCTION</b> .....	<b>4</b>
1.1 Overview.....	4
1.2 Intended Use And Foreseeable Misuse .....	4
<b>2 SAFETY</b> .....	<b>5</b>
2.1 Safety Alert Symbol And Safety Words .....	5
2.2 Operational Hazards.....	5
Prepare For Emergencies .....	6
Replace Safety Signs .....	6
Do Not Allow Riders .....	6
Lower Operating Speed .....	6
Avoid Rollover .....	7
Avoid Powerlines.....	7
Detach Feller Buncher Safely .....	7
Hazards From Modifying Equipment .....	7
2.3 Maintenance Hazards .....	9
<b>3 SAFETY SIGNS</b> .....	<b>10</b>
<b>4 OPERATION</b> .....	<b>12</b>
4.1 Preparation For Use .....	12
4.2 Hydraulic Connections .....	13
4.3 Control Box (Optional).....	13
4.4 Machine Components .....	13
4.5 Attach To Skidsteer .....	14
4.6 Detach From Skidsteer .....	14
4.7 Transporting.....	14
4.8 First Time User Tips .....	14
4.9 Field Operation .....	15
4.10 Hydraulic Adjustments.....	16
<b>5 SERVICE AND</b> .....	<b>17</b>
<b>MAINTENANCE</b> .....	<b>17</b>
5.1 Lubrication .....	17
5.2 Inspect Hoses .....	18
5.3 Inspect And Rotate Or Replace Cutting Teeth .....	18
5.4 Remove And Install Rotor.....	19
5.5 Zero Leak Case Drain Relief Valve.....	20
5.6 Regenerative Valve Operation.....	21
<b>6 TROUBLESHOOTING</b> .....	<b>22</b>
<b>BAUMALIGHT ATTACHMENT WARRANTY</b> .....	<b>23</b>

# 1 INTRODUCTION

## 1.1 Overview

Congratulations on your choice of a Baumalight Feller Buncher to complement your operation. This equipment has been designed and manufactured to meet the needs of a discriminating buyer.

This new and unique design allows us to build it very economically and makes it a very compact unit for storage and transport. Hydraulic controls are easy to adjust and operate.

Safe, efficient and trouble free operation of your feller buncher requires that you and anyone else who will be operating or maintaining the feller buncher, read and understand the Safety, Operation, Maintenance and Troubleshooting information contained within the Operator's Manual.

This manual covers the Baumalight skidsteer mounted Feller Buncher. Use the Table of Contents as a guide to locate required information.

Keep this manual handy for frequent reference and to pass on to new operators or owners. Call your Baumalight dealer, distributor or the factory if you need assistance, information or additional copies of the manuals.

**OPERATOR ORIENTATION** - The directions left, right, front and rear, as mentioned throughout this manual, are as seen from the operator's seat and facing in the direction of travel.

## 1.2 Intended Use And Foreseeable Misuse

The feller buncher is designed to be used by an experienced operator. Operator must be trained in the safe operation of a skidsteer and hazards related to using the feller buncher and the safe use of the feller buncher for the intended purpose.

Operators will require personal protective equipment to reduce the risk from some hazards that cannot be completely eliminated or controlled by the design of the feller buncher.

Care is required to ensure that the feller buncher will not come in contact with metallic objects, stones or other materials.

Feller bunchers are not designed for use in hazardous atmospheres where there is a risk of fire or explosion due to flammable gases or vapors. Use in hazardous, explosive atmospheres is prohibited. Serious injury or death of the operator or bystanders may be caused if feller buncher is misused. Misuse may also cause damage to the machine carrying the feller buncher.

# 2 SAFETY

## 2.1 Safety Alert Symbol And Safety Words

You must read, understand and follow the instructions given by the operating unit manufacturers, as well as the instructions in this manual.

The safety information in this manual is denoted by the safety alert symbol:



This symbol means ATTENTION! BECOME ALERT! YOUR SAFETY IS INVOLVED!

The level of risk is indicated by the following signal words:


 <b>DANGER</b>
<b>DANGER</b> - Indicates a hazardous situation, which, if not avoided, <b>WILL</b> result in death or serious injury.


 <b>WARNING</b>
<b>WARNING</b> - Indicates a hazardous situation, which, if not avoided, could result in death or serious injury.

 <b>CAUTION</b>
<b>CAUTION</b> - Indicates a hazardous situation, which, if not avoided, could result in minor or moderate injury.

<b>NOTICE</b>
<b>NOTICE</b> - Indicates a situation that could result in damage to the equipment or other property.

## 2.2 Operational Hazards

 <b>WARNING</b>
<b>Prevent death or serious injury.</b>
<b>Read and understand this manual before operating feller buncher.</b>
<b>Always stop engine and remove key before leaving operators seat.</b>
<b>Never allow anyone in near feller buncher or in area where tree may fall during operation.</b>
<b>Travel at a safe speed.</b>

 <b>WARNING</b>
<b>Prevent death or serious injury from moving parts.</b>
<b>Moving parts can crush and dismember.</b>
<b>Do not operate without guards and shields in place.</b>
<b>Disconnect and lockout power source before adjusting or servicing.</b>

 <b>WARNING</b>
<b>Use feller buncher only for the designed applications.</b>
<b>Any other use may result in personal injury, damage to equipment and may void the warranty.</b>



## WARNING

**Prevent death or serious injury.**

**Verify feller buncher is locked to quick attach hitch before operation or transport.**



## WARNING

**Protect from flying debris.**

**Wear proper safety glasses, goggles, or a face shield to protect from flying debris.**

Carefully read all safety messages in this manual and on equipment safety signs. Keep safety signs in good condition and replace missing or damaged safety signs.

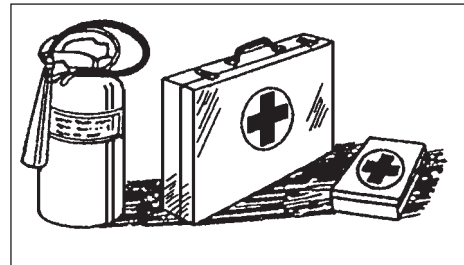
New equipment components and repair parts must include the current safety decal.

Learn how to properly operate equipment. NEVER operate or work around this equipment without proper instruction, while fatigued or under the influence of alcohol, prescription or non-prescription medication or if feeling ill.

Keep your equipment in proper working condition. Know the regulations and laws that apply to you and your industry. This manual is not to replace any regulations or laws. Additional information may be found at: [www.asae.org](http://www.asae.org) or [www.osha.gov](http://www.osha.gov). If you do not understand any part of this manual, contact Baumalight at 866-820-7603.

## Prepare For Emergencies

- Be prepared in case of emergencies.
- Keep a fire extinguisher and first aid kit close to the machine.
- Keep emergency phone numbers in your phone or close by.
- Know your address so emergency services can locate you if an emergency arises.



## Replace Safety Signs

- Replace missing or damaged safety signs.
- Safety signs are identified in Section 3 of this manual.
- Replacement safety signs are available from your Baumalight dealer.

## Do Not Allow Riders

- NEVER lift or carry anyone on feller buncher.
- NEVER use feller buncher as a work platform.
- NEVER allow passengers on feller buncher.

## Lower Operating Speed


Keep feller buncher low and move at slow speeds on rough or uneven terrain.

## Avoid Rollover

The equipment may rollover, resulting in death or serious injury. To help prevent rollover:

- Travel at a slow speed.
- Avoid sharp turns & sudden movement on slopes.
- Carry feller buncher close to the ground.
- Avoid holes, ditches and other obstructions which may cause equipment to rollover.
- Balance load so weight is evenly distributed and load is stable.
- Use caution when operating on slopes and do not operate on excessively steep slopes.
- Do not exceed load capacity of equipment.

## Avoid Powerlines

 <b>DANGER</b>
<b>Prevent electrocution.</b>
<b>Death or serious injury can result if equipment or tree comes near or contacts power line.</b>
<b>Electrocution can occur without direct contact.</b>

- Check clearance before raising equipment.
- Verify cut trees will not contact or come near power line.


DO NOT leave the operator's seat if any part of the equipment or tree contacts electric line or cable.

## Detach Feller Buncher Safely

Detach feller buncher on a firm and level surface. Feller buncher may fall over if detached on unlevel or soft surface. Keep clear of machinery.

Relieve hydraulic pressure before disconnecting hydraulic hoses.

## Raised Attachment

 <b>WARNING</b>
<b>Crushing hazard.</b>
<b>Raised, unsupported feller buncher can fall, resulting in death or serious injury.</b>
<b>Never enter the area under a raised feller buncher.</b>

A raised feller buncher can lower unexpectedly, resulting in death or serious injury.

NEVER enter area under a raised feller buncher.

Lower feller buncher to ground, engage parking brake, shut off engine and remove key before servicing.

## Hazards From Modifying Equipment

Do not make any alterations to your feller buncher. Altering may cause your equipment to be unsafe and may void the manufacturers' warranty.

## Avoid High Pressure Fluids

### **WARNING**

**Pressurized fluids can penetrate the skin.**

**Hydraulic hoses can fail from age, damage and exposure.**

**Use body and face protection while searching for leaks. A tiny, almost invisible leak can penetrate the skin, thereby requiring immediate medical attention.**

**Use wood or cardboard to detect hydraulic leaks, never use your hands.**

Escaping fluid under pressure can penetrate the skin causing serious injury.

Prevent the hazard by relieving pressure before connecting or disconnecting hydraulic lines. Verify all connections are tight before applying pressure. Search for leaks with a piece of cardboard or wood. Protect hands and body from high pressure fluids. If an accident occurs, see a doctor immediately. Any fluid injected into the skin must be surgically removed within a few hours or serious infection may result.

Doctors unfamiliar with this type of injury should reference a knowledgeable medical source.

## Avoid Loud Noise

### **WARNING**

**Prolonged exposure to loud noise can cause impairment or loss of hearing.**

**Wear a suitable hearing protective device such as earmuffs or earplugs to protect against objectionable or uncomfortable loud noises.**

## Avoid Wood Dust Inhalation

### **WARNING**

**Drilling, sawing, sanding or machining wood products can expose you to wood dust, a substance known to the State of California to cause cancer.**

**Avoid inhaling wood dust or use a dust mask or other safeguards for personal protection. For more information go to [www.P65Warnings.ca.gov/wood](http://www.P65Warnings.ca.gov/wood).**

### **WARNING**

**Wear an approved dust mask or respirator.**

**Follow local, state and federal regulations.**



## 2.3 Maintenance Hazards

Before servicing, park machine on a firm and level surface, set parking brake and place a “Do Not Operate” tag on control panel. Read and understand this manual. If you do not understand any part of the manual, contact Baumalight at 866-820-7603.

Always wear face and/or eye protection, safety shoes, and other protective equipment appropriate for the job.

Do not make unauthorized modifications. Contact Baumalight at 866-820-7603. Before you weld, cut/drill holes, or make any other modifications.

Always use Baumalight replacement parts.

### **WARNING**

**Moving parts can crush and cut.**

**Keep clear of moving components.**

**Follow lockout procedure before servicing.**

### **WARNING**

**Burn hazard.**

**Hot and high pressure hydraulic oil.**

**Allow oil to cool before servicing.**

### **WARNING**

**Entanglement hazard.**

**Keep clear of moving components.**

**Wear proper protective equipment appropriate for the job.**

### **WARNING**

**Crushing hazard.**

**Before performing inspections, service or maintenance:**

**Park machine on firm, level surface.**

**Engage parking brake.**

**Turn engine off and remove key.**

**Place “Do Not Operate” tag on skidsteer control panel.**

### **WARNING**

**Drilling, sawing, sanding or machining wood products can expose you to wood dust, a substance known to the State of California to cause cancer.**

**Avoid inhaling wood dust or use a dust mask or other safeguards for personal protection. For more information go to [www.P65Warnings.ca.gov/wood](http://www.P65Warnings.ca.gov/wood).**

### **WARNING**

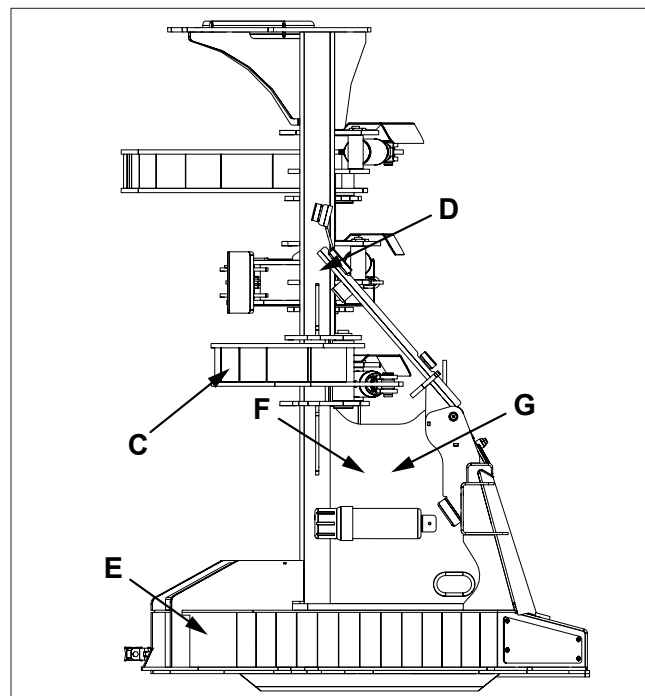
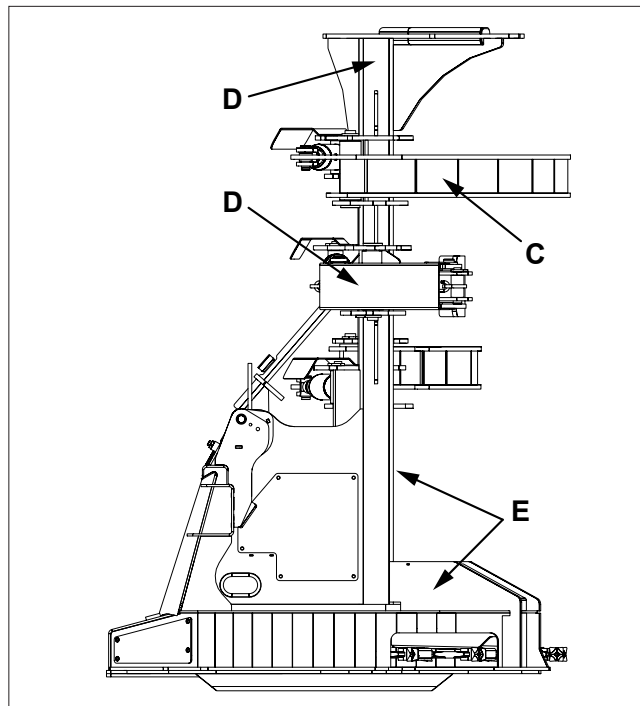
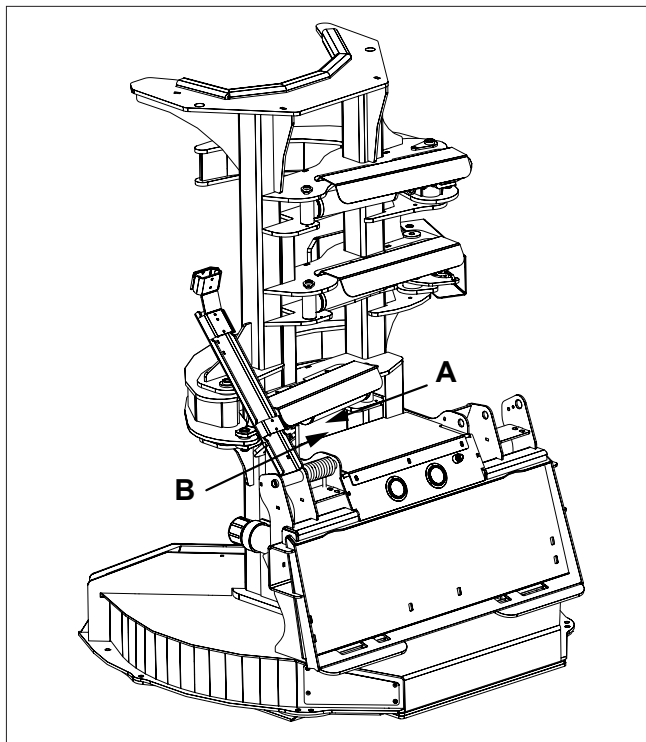
**Wear an approved dust mask or respirator.**


**Follow local, state and federal regulations.**

### 3 SAFETY SIGNS


The two and four panel safety decals are pictorial and have a yellow background. The panel with a triangle indicates the potential hazard. The panel without a triangle indicates how to avoid the hazard.


If any of the decals are missing, are damaged, or if you do not understand the decal, please contact your dealer.



- A. D005253  WARNING - Pressurized fluid hazard. Pressurized fluids can penetrate the skin. Do not check for leaks with your hands. Keep back a safe distance when pressurized.



- B. D005262  WARNING - P65 warning information.


 **WARNING:** This product can expose you to chemicals including 1,3-Butadiene and lead, which are known to the state of California to cause cancer and birth defects or other reproductive harm. For more information go to [www.P65Warnings.ca.gov](http://www.P65Warnings.ca.gov).

D005262

- C. D003190


 **DANGER STAND CLEAR**

D003190

- D. D005127  WARNING - Rotating blade hazard. Keep back while machine is operating.



D005127

- E. D005223  WARNING - Rotating blade hazard. Keep back 75 m while machine is operating. Wait for blade to stop before approaching machine.

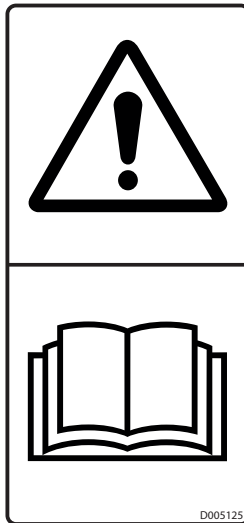


D005223

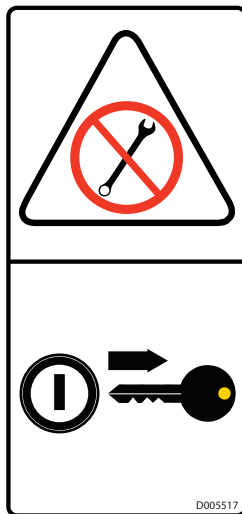
## 4 OPERATION

### 4.1 Preparation For Use

- F. D005125 **⚠** WARNING - Read and understand safety signs on the machine and operating instructions in this manual before operating machine.



- G. D005117 **⚠** WARNING - Remove key before servicing.



Although the feller buncher has been carefully inspected and checked prior to shipment from manufacturer, it is recommended that the unit be thoroughly inspected.

Check all bolts for tightness and remove all shipping tags, bags, skids, and blocking.

Remove any masking materials affixed during painting. Inspect equipment to verify that nameplates and all safety warning, caution signs and decals provided with the equipment are in place and clearly visible.

Visually inspect the feller buncher before each start up. Check for loose or missing parts and any damage that may have occurred during moving or shipping.

Review all skidsteer pre-start instructions, and ensure that all recommended steps and procedures have been followed.

## 4.2 Hydraulic Connections

### WARNING

**Pressurized fluids can penetrate the skin.**

**Disconnect and lock out power source before disconnecting and/or connecting hydraulic hoses.**

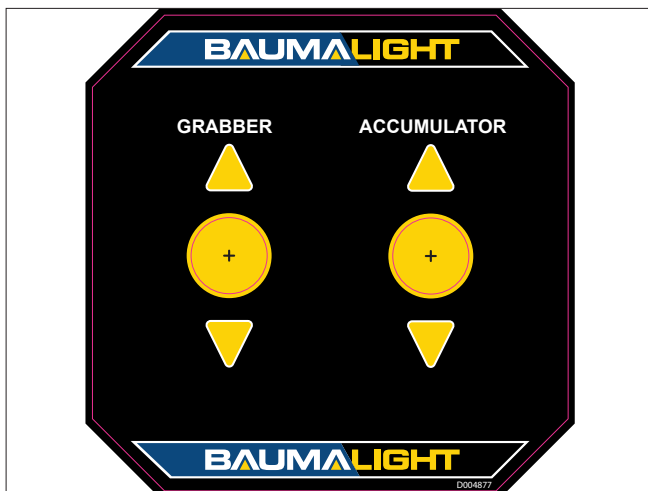
The feller buncher is equipped with three hoses, pressure, return and case drain. Hydraulic couplers are not provided with the feller buncher. You must install couplers and connect your skidsteer pressure, return and case drain hoses to the feller buncher hoses. Install your couplers to the hoses listed in the table below.

Fitting Size	Hose Description	Qty.
3/4 JIC FM	Pressure & Return	2
3/8 JIC FM	Case Drain	1

Identify the pressure port hose and connect your hoses to the feller buncher hoses.

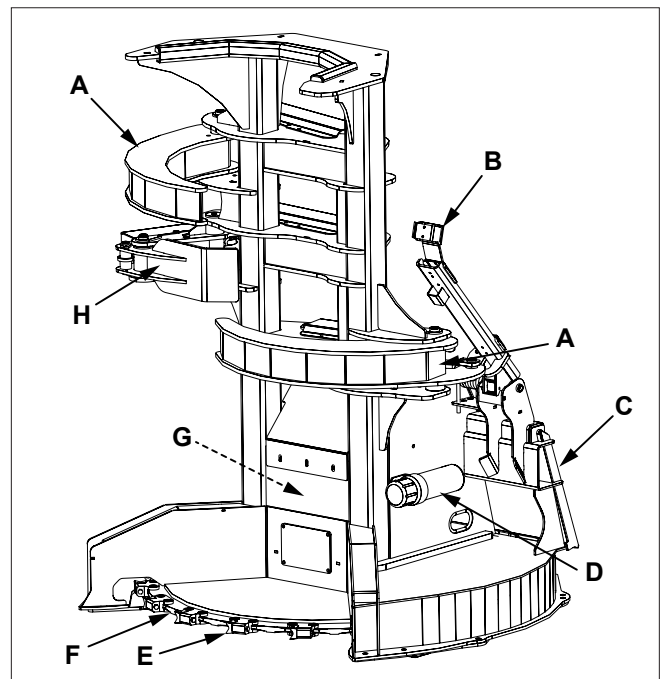
Maximum allowable case pressure is 100 psi, case drain is required.

## 4.3 Control Box (Optional)



## 4.4 Machine Components

- A. Holding Arms - Operate independently of the accumulator arm.
- B. Hydraulic Hose Holder
- C. Quick Attach
- D. Operators Manual Holding Tube
- E. Cutting Tooth
- F. Rotor
- G. Hydraulic Motor
- H. Accumulator Arm - Operates independently of the holding arms and allows the operator to carry multiple trees at one time.



## 4.5 Attach To Skidsteer



### WARNING

To prevent injury or machine damage put transmission in park.

Never position yourself between skidsteer and feller buncher.

Only experienced and properly trained operator's may operate skidsteer and feller buncher.

1. Read and follow all safety instructions.
2. Attach skidsteer to feller buncher. See skidsteer operator's manual.
3. Connect hydraulic hoses. Verify hydraulic hoses are clear of pinch areas and moving parts.
4. Connect control box to skidsteer 12 volt power supply, or connect 14 or 8 pin auxiliary plug.
5. Move to a clear open area to test functions.

## 4.6 Detach From Skidsteer



### WARNING

Prevent serious injury or death caused by unexpected movement:

1. Park skidsteer on a level surface.
2. Lower feller buncher to ground.
3. Engage skidsteer parking brake.
4. Shut off engine and remove key.

1. Park skidsteer on a level surface.
2. Lower feller buncher to the ground.
3. Shut off engine and remove key.
4. Disconnect hydraulic hoses.
5. Disconnect electrical connector.
6. Detach skidsteer from feller buncher. See skidsteer Operator's Manual.

## 4.7 Transporting

1. Verify all reflectors and Slow Moving Vehicle (SMV) sign are visible.
2. Raise feller buncher slightly off ground.
3. Travel at a reasonable and safe speed.

## 4.8 First Time User Tips

Operate all functions in an open area with skidsteer at idle to get a good feel for the controls.

Run throttle only at half speed for first time users.



### WARNING

Always stop engine and remove key before leaving operators seat.

## 4.9 Field Operation

### **WARNING**

Prevent serious injury or death caused by unexpected movement:

1. Park skidsteer on a level surface.
2. Lower feller buncher to ground.
3. Engage skidsteer parking brake.
4. Shut off engine and remove key.

### **WARNING**

Prevent serious injury or death.

Never operate feller buncher within 300 ft (92 m) of any person.

On steep terrain, fell trees while traveling up hill.

Do not exceed rated cutting, accumulating or carrying capacities of skidsteer and feller buncher.

Cut stumps as short as possible.

Do not open holding or accumulator arms until trees are leaning away from skidsteer.

Do not allow riders.

### **WARNING**

Drilling, sawing, sanding or machining wood products can expose you to wood dust, a substance known to the State of California to cause cancer.

Avoid inhaling wood dust or use a dust mask or other safeguards for personal protection. For more information go to [www.P65Warnings.ca.gov/wood](http://www.P65Warnings.ca.gov/wood).

### **WARNING**

Wear an approved dust mask or respirator.

Follow local, state and federal regulations.

1. Attach feller buncher to skidsteer. See Attach/Detach in this section.
2. If equipped with a control box, move switch to select holding arms and accumulator arm.
3. Operate hydraulics to open holding arms and accumulator arm.
4. Position feller buncher so rotor is close to tree and as low to the ground as possible. Position with the head tilted slightly forward (about 5°). This will push the top of the tree away slightly preventing saw jam.
5. Operate hydraulics to start rotor.
6. Move forward into tree while closing holding arms to hold cut tree. If multiple small trees will be cut, close accumulator arm to hold tree and open holding arms. Move forward into tree while closing holding arms to hold cut tree.
7. Move to drop site, tilt head forward and open holding arms and accumulator arm if holding multiple trees to drop trees.

## 4.10 Hydraulic Adjustments



### WARNING

Prevent serious injury or death caused by unexpected movement:

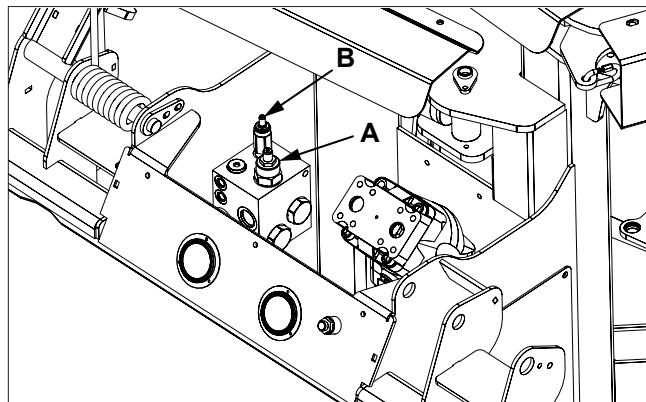
1. Park on a level surface.
2. Lower feller buncher to the ground.
3. Engage parking brake.
4. Shut off engine and remove key.

1. Park skidsteer on a level surface.
2. Lower feller buncher to the ground.
3. Engage parking brake, shut off engine and remove key.

(A) Flow Adjust - Adjusting the flow determines how much oil is sent to cylinders and rotor. The more oil that is sent to the rotor will result in cylinders moving slower. If more oil is sent to the cylinders, rotor speed will decrease. If adjustor is opened too far, the main pressure gauge will show the carrier relief and the rotor will no longer spin.

Typical adjustment is 1-1/4 turn out from closed position when we ship. To adjust this, hold hex screw with hex wrench and loosen lock nut. Turn hex screw 1/4 turn increments and hold in position while tightening lock nut. Test operation and adjust again if desired.

(B) Pressure relief is set at the factory should not be adjusted. Image below is shown with top plate removed for adjustments. Do not operate with top plate removed.



**Note:** Skidsteers with high/low hydraulic flow switching capability may need a jumper wire on the pin 14 plug to keep the skidsteer at high flow.

Contact your skidsteer dealer or Baumalight dealer for more information.



# 5 SERVICE AND MAINTENANCE

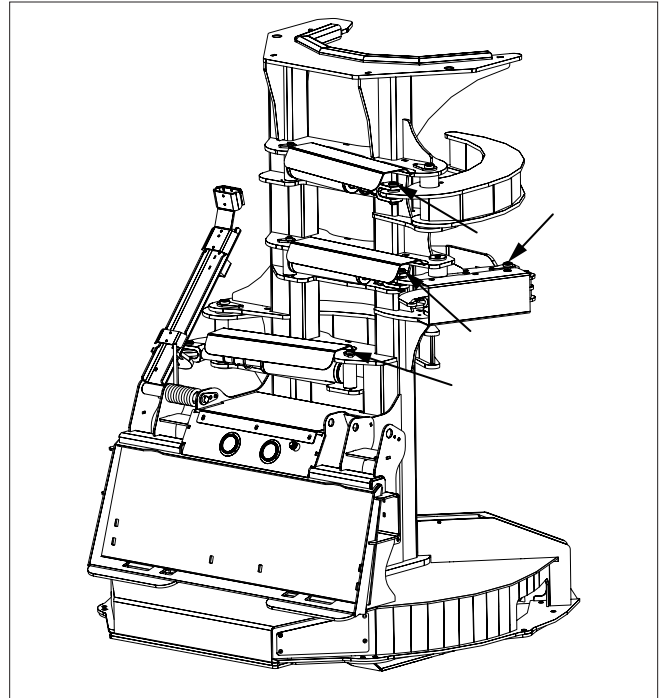
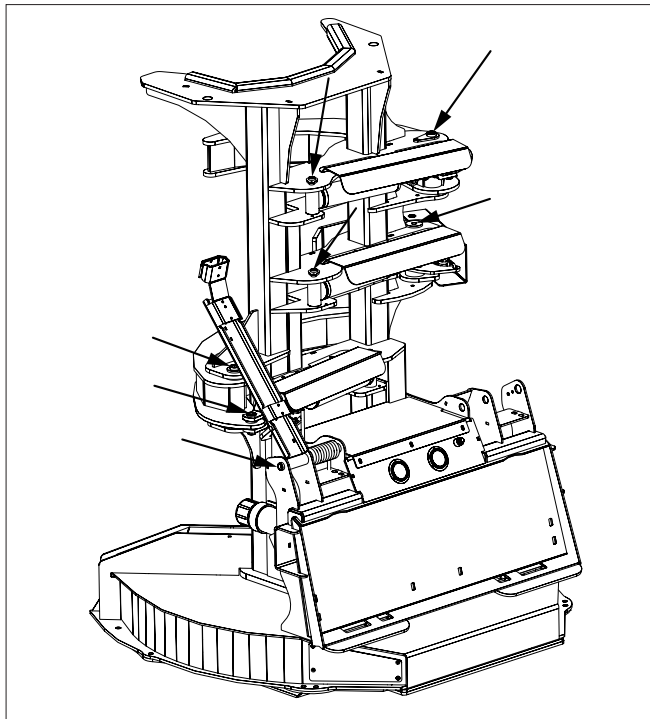
## 5.1 Lubrication

 **WARNING**

Prevent serious injury or death caused by unexpected movement:

1. Park skidsteer on a level surface.
2. Lower feller buncher to ground.
3. Engage skidsteer parking brake.
4. Shut off engine and remove key.

1. Pump grease into all pivot point lubrication fittings until adequately lubricated.



## 5.2 Inspect Hoses

### WARNING

Prevent serious injury or death caused by unexpected movement:

1. Park skidsteer on a level surface.
2. Lower feller buncher to ground.
3. Engage skidsteer parking brake.
4. Shut off engine and remove key.

### WARNING

Pressurized fluids can penetrate the skin.

Hydraulic hoses can fail from age, damage and exposure.

Use body and face protection while searching for leaks. A tiny, almost invisible leak can penetrate the skin, thereby requiring immediate medical attention.

Use wood or cardboard to detect hydraulic leaks, never use your hands.

Inspect hydraulic hoses for damage and wear. Replace damaged or worn hoses before operating.

## 5.3 Inspect And Rotate Or Replace Cutting Teeth

### WARNING

Prevent serious injury or death caused by unexpected movement:

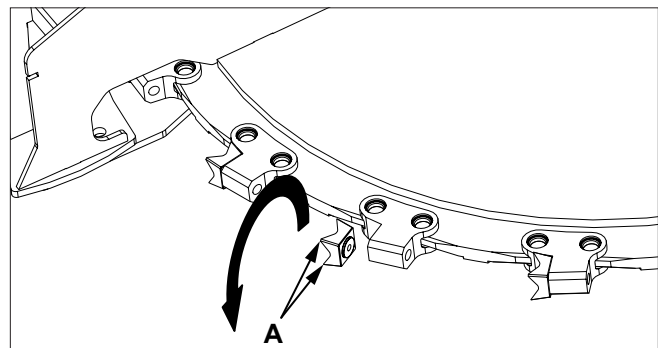
1. Park skidsteer on a level surface.
2. Lower feller buncher to ground.
3. Engage skidsteer parking brake.
4. Shut off engine and remove key.

Check teeth bolt tightness every 10 minutes for the first hour, then every 6 hours of use.

Check cutting edge (A) of teeth for wear and damage every 6 hours of use. Keep cutting teeth in good condition. Unit will cut faster and remaining teeth will last longer if broken teeth are replaced.

Each tooth can be rotated 180° from its original position before replacement is necessary.

1. Park skidsteer and feller buncher on a level surface.
2. Lower feller buncher to the ground.
3. Shut off engine and remove key.
4. Inspect cutting teeth for damage and wear. Once cutting edges (A) is worn, remove bolt, pull tooth out and rotate tooth 180° so new edge is on outside (cutting) edge.
5. Replace individual teeth as needed.
6. Install tooth and tighten bolt to 37 lb-ft (50 Nm) of torque.



## 5.4 Remove And Install Rotor

### WARNING

Prevent serious injury or death caused by unexpected movement:

1. Park skidsteer on a level surface.
2. Lower feller buncher to ground.
3. Engage skidsteer parking brake.
4. Shut off engine and remove key.

1. Park skidsteer on a level surface.
2. Lower feller buncher to the ground.
3. Shut off engine and remove key.
4. Disconnect hydraulic hoses.
5. Disconnect electrical connector.
6. Detach skidsteer from feller buncher. See skidsteer Operator's Manual.

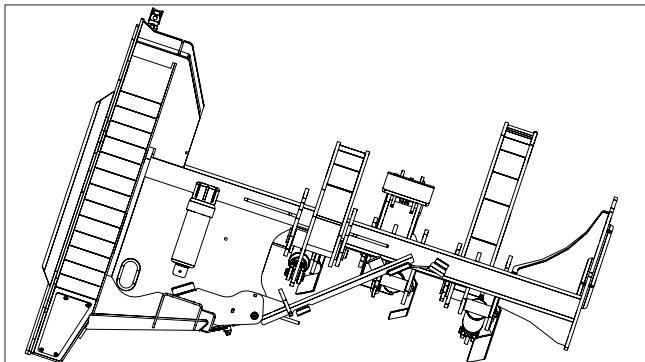
### WARNING

Crushing and severing hazard.

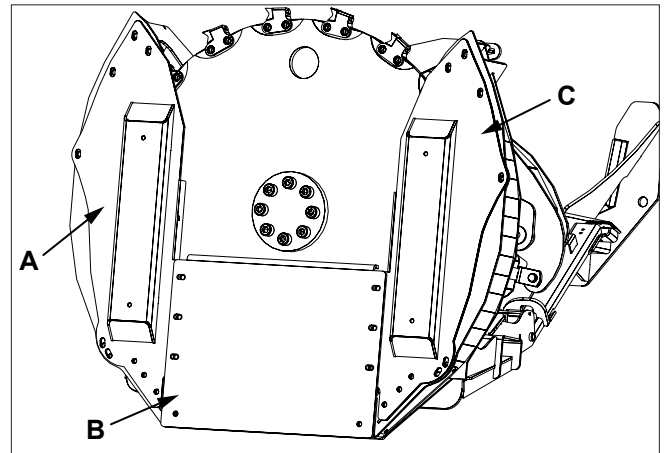
Feller buncher weight is 2512 lbs (1140 kg).

Use a properly rated lifting device to lay feller buncher down for rotor removal.

7. Connect a properly rated lifting device to feller buncher and lay machine down on the quick attach side.



8. Remove covers (A), (B) and (C).



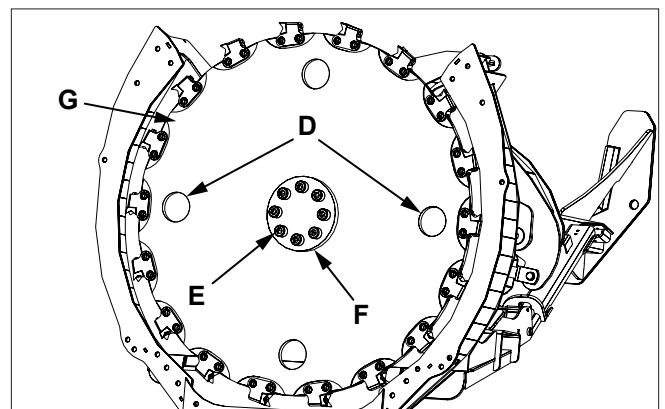
### WARNING

Crushing and severing hazard.

Rotor weight is 375 lbs (170 kg).

Use a properly rated lifting device to lift rotor.

9. Attach a properly rated lifting device to holes (D) in rotor. Apply a slight tension on lifting device.
10. Remove eight socket head cap screws (E) and plate (F). Carefully remove rotor with lifting device.



11. Position rotor on motor shaft with lifting device.
12. Install plate (F).
13. Apply a medium strength thread lock to cap screw (E) threads.
14. Install socket head cap screws (E).
15. Tighten caps screws (E) to 188 lb-ft (255 Nm) of torque.
16. Remove rotor lifting device.
17. Position feller buncher in the upright position with lifting device.
18. Remove lifting device.

## 5.5 Zero Leak Case Drain Relief Valve

The feller buncher is equipped with a case drain line that is to be routed to the skidsteer hydraulic reservoir.

It is normal for a hydraulic motor to have a slight amount of internal leakage.

The case drain line will allow this internal leakage to be returned to the reservoir, preventing excessive pressure on the motor seal.

Starting with model year 2022, feller bunchers will be equipped with a zero leak relief valve (A) installed in the case drain line.

If the case drain line is not connected or becomes obstructed, the zero leak relief valve will vent the pressurized hydraulic oil to the atmosphere. The zero leak relief valve will self reset after hydraulic pressure reduced.

### WARNING

**Pressurized fluids can penetrate the skin.**

**Keep bystanders away from machine during operation.**

**A tiny, almost invisible leak can penetrate the skin, thereby requiring immediate medical attention.**

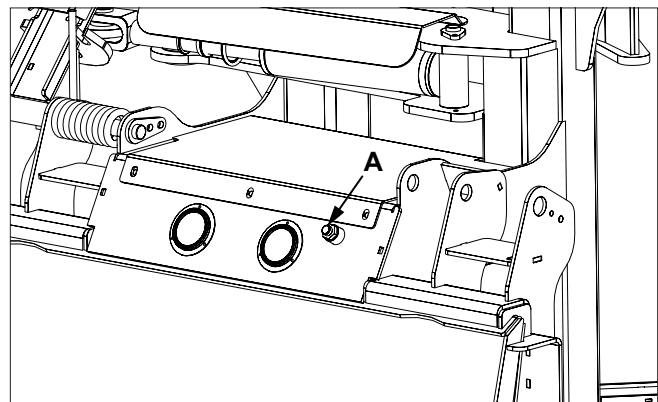
If hydraulic oil is coming out of the zero leak relief valve, shut down machine immediately. Inspect the case drain line connection and lines. Contact your dealer if case drain lines and connection are good.

### NOTICE

**Environmental hazard.**

**Clean up any spilled hydraulic oil immediately.**

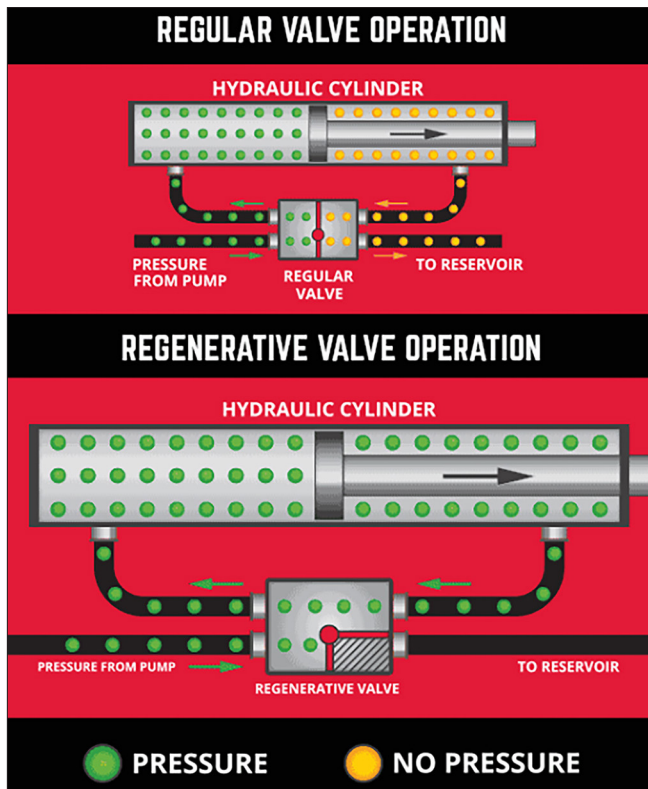
A properly installed case drain protected by a zero leak relief valve will save the work of replacing the motor shaft seal and also improve the efficiency of your hydraulic system.



## 5.6 Regenerative Valve Operation

The regenerative valve pressurizes both side of the cylinder at the same time. The side without the rod has more surface area (more force). Even though both side have equal pressure, they do not have equal force. Therefore, the rod moves out.

Since the entire volume of the cylinder is already full and pressurized, the pump only has to contribute the missing volume of the rod. This increases the cycle speed and productivity.



## 6 TROUBLESHOOTING

PROBLEM	CHECK	SOLUTION
Holding arm does not close.	Material jammed in arm.	Remove material.
	Low oil.	Check oil level in skidsteer. Add if necessary.
	Not enough oil flow.	Check flow control on skidsteer. See your dealer.
Shear does not have much power.	Low oil.	Check oil level in skidsteer. Add if necessary.
	Oil filter plugged.	Replace skidsteer oil filter.
	Relief valve not set properly.	Set relief valve. Pressure should be between 2,500 and 3,500 psi.
	Not enough oil pressure.	Check hydraulic pressure on skidsteer. See your dealer.
Rotor does not spin.	Rotor jammed.	Remove material from rotor / teeth.
	Verify hydraulic hoses are connected.	Connect hoses.
Skidsteer is not able to lift feller buncher.	Skidsteer is too small.	Use proper size skidsteer.
Excessive vibration.	Cutting teeth worn or missing.	Replace worn, broken or missing cutting teeth.
	Debris packed on rotor / teeth.	Remove debris.
Holding arms or accumulator arm moves slow or stutters when fully extended or retracted.	On-board pressure relief valve is set higher than machine relief valve.	Check hydraulic pressure relief. See your dealer.
Hydraulic oil coming out of zero leak relief valve.	Case drain connector for proper connection and line for obstructions or pinched line.	Connect case drain line if not connected. Replace line if damage, obstructed or pinched.
	Combo coupler seals.	Combo coupler seals may be leaking, allowing pressurized fluid to escape to the case drain line.

# BAUMALIGHT ATTACHMENT WARRANTY

The product is warranted to be free of defects in materials and workmanship under normal use and service, for a period of one year from the date of purchase. This warranty covers parts and labor, but does not cover misuse, negligence, dealer travel time and shipping costs to and from the dealer.

Replacement of individual parts vs. assemblies are at the discretion of the manufacturer.

Warranted replacement parts will be shipped to the customer free of charge via ground shipping. If expedited shipping requested, the customer will be charged the difference between ground shipping and the cost of expedited shipping. Damage in transit is not covered by warranty.

Baumalight products purchased new must be registered for warranty at <https://baumalight.com/support/product-registration>.

Warranty claims must include the original bill of sale. This warranty is extended only to the original purchaser and there is never any warranty on anything sold through auction.

This product must be operated and maintained in accordance with the Operating and Maintenance Instructions supplied with this unit.

Under no circumstances will the manufacturer be liable for any consequential damage or expense of any kind, including loss of profits. The manufacturer is under no circumstances liable for carrier unit damage of any kind. The manufacturer is not liable for the maintenance of the product. Baumalight will not cover time to diagnose and repair compatibility issues between carrier and attachment.

When receiving a shipment from the manufacturer:

1. Compare items received with the carriers bill of lading.
2. Check for damage before signing for the shipment. If damage is found, note damage on carriers bill of lading and photograph the damage.

Warranty repairs may be done by the end user if the end user is willing and capable.

The Manufacturer's Liability is limited to repair of the product and/or replacement of parts and is given to the purchaser in lieu of all other remedies including incidental and consequential charges. There are no warranties, expressed or implied other than those specified herein. For the nearest Authorized Service Center call the manufacturer.

The allowable time for dealers to perform some repairs can be found on our website in the support section under Service And Instruction Videos & Support. If website does not list a time for the repair, dealer must contact the manufacturer before starting the repair to find how much time will be covered for the activity. The manufacturer will only cover up to 1 hour to diagnose and troubleshoot an issue, regardless of the suggestions recommended by the manufacturer to check and verify an issue.

Model Number: \_\_\_\_\_ S/N: \_\_\_\_\_

Date of Purchase: \_\_\_\_\_ Owner's Name \_\_\_\_\_

Replacement parts sold after the equipment warranty has expired are warranted for a period of 30 days from the date of purchase. Labor, diagnosis and troubleshooting are not covered on replacement parts.

MTB MFG INC.  
CORPORATE HEADQUARTERS  
4575 Powell Rd.,  
Wallenstein, Ontario Canada  
N0B 2S0  
Phone - 519.698.9864  
Toll Free - 866.820.7603  
Fax - 519.698.1087  
[www.baumalight.com](http://www.baumalight.com)

