

# ATTACHMENTS FOR TRACTORS, SKIDSTEERS & EXCAVATORS



AUGERS  
BOOM MOWERS  
BRUSH MULCHERS  
CHEATER ADAPTORS  
DUMPER  
EXCAVATOR ADAPTORS  
FELLER BUNCHER  
FLAIL MOWER  
GENERATORS  
MINI SKIDSTEERS

ROTARY BRUSH CUTTER  
SCREW SPLITTERS  
STUMP GRINDERS  
STUMP PLANERS  
TREE PULLER  
TREE SAWS  
TREE SHEARS  
TREE SPADES  
TRENCHERS





# NEW ITEMS



**NEW  
2-SPEED  
MODELS**



## 2-SPEED MINI SKIDSTEERS



## MINI DUMPERS SELF-PROPELLED & TRAILER MODELS

## S22 STUMP GRINDER WITH 12V SWING ACTUATOR



## FMP780 FLAIL MOWER



## FEB700 FLAIL MOWER

# TABLE OF CONTENTS

---



**Augers**  
Page 4



**Boom Mowers  
-Skidsteer**  
Page 10



**Brush Mulchers**  
Page 12



**Cheater  
Adaptors**  
Page 16



**Dumpers**  
Page 18



**Feller  
Bunchers**  
Page 20



**Flail Mowers**  
Page 22



**Generators**  
Page 24



**Mini  
Skidsteers**  
Page 30



**Rotary Brush  
Cutters**  
Page 32



**Screw Splitters  
& Stump Planers**  
Page 36



**Stump  
Grinders**  
Page 38



**Tree Shears &  
Pullers**  
Page 42



**Tree Saws**  
Page 46



**Tree Spades**  
Page 48



**Trenchers**  
Page 54



# AUGERS



**FOR FULL PRODUCT DETAILS, PRICING, PRODUCT VIDEOS, SUPPORT AND TO FIND A DEALER, VISIT [BAUMALIGHT.COM](https://www.baumalight.com)**

For full product details and pricing visit [Baumalight.com](https://www.baumalight.com).



## OWNER-OPERATOR SERIES



### **RC442**

Drive Type: Gear  
Excavator Size: 2,000 - 4,000 lbs  
Gear Ratio: 3.18:1  
Max GPM: 18



### **RC582**

Drive Type: Planetary  
Excavator Size: 2,000 - 6,000 lbs  
Gear Ratio: 3.6:1  
Max GPM: 25

## CONTRACTOR SERIES



### **RC586**

Drive Type: Heavy Duty Planetary  
Excavator Size: 3,000 - 20,000 lbs  
Gear Ratio: 6:1  
Max GPM: 25



### **RC780**

Drive Type: Heavy Duty Planetary  
Excavator Size: 4,000 - 30,000 lbs  
Gear Ratio: 5:1  
Max GPM: 45

## **EASY-TO-USE MODULAR PLATFORM**



A solution for dealers and customers that need to adapt auger bits to various types of Auger drives.

Check out more on [www.baumalight.com](http://www.baumalight.com)



# TREE AUGER



## Aggressor Tree Augers

Includes 2-9/16" Round Hub	Includes 2" Hex Hub	Description	Dimensions Diam. X Len.
-	135554	18" Tree Auger	18" Tree Auger
135543	-	24" Tree Auger	24" Tree Auger
-	135556	30" Tree Auger	30" Tree Auger

## Twisted J Tree Augers

2"Hex Hub	Description	Dimensions
TJTA18H	18" Twisted J Tree Auger (Welded Hub)	18" X 48"
TJTA24H	24" Twisted J Tree Auger (Welded Hub)	24" X 48"
TJTA30H	30" Twisted J Tree Auger (Welded Hub)	30" X 48"
TJTA36H	36" Twisted J Tree Auger (Welded Hub)	36" X 48"
TJTA42H	42" Twisted J Tree Auger (Welded Hub)	42" X 48"
TJTA48H	48" Twisted J Tree Auger (Welded Hub)	48" X 48"

## HOW IT WORKS



**Step 1:** Choose a new location for three and position your auger drive over that location.



**Step 2:** Dig hole to depth of auger bit



**Step 3:** Lower the tree into hole and push excess dirt back into the hole and around the tree base.

# TWISTED J AUGERS



## 2" Round Hub

2" Round Hub	Description	Dimensions
TJ04A	4.5" SDA series single flight Twisted J Auger	4.5" x 48"
TJ06A	6" DCA series double flight Twisted J Auger	6" x 48"
TJ09A	9" DCA series double flight Twisted J Auger	9" x 48"
TJ12A	12" DCA series double flight Twisted J Auger	12" x 48"
TJ15A	15" DCA series double flight Twisted J Auger	15" x 48"
TJ18A	18" DCA series double flight Twisted J Auger	18" x 48"
TJ24A	24" DCA series double flight Twisted J Auger	24" x 48"
TJ30A	30" DCA series double flight Twisted J Auger	30" x 48"
TJ36A	36" DCA series double flight Twisted J Auger	36" x 48"



2" Round Hub

## 2-9/16" Round Hub

2-9/16" Round Hub	Description	Dimensions
TJ04B	4.5" SDA series single flight Twisted J Auger	4.5" x 48"
TJ06B	6" DCA series double flight Twisted J Auger	6" x 48"
TJ09B	9" DCA series double flight Twisted J Auger	9" x 48"
TJ12B	12" DCA series double flight Twisted J Auger	12" x 48"
TJ15B	15" DCA series double flight Twisted J Auger	15" x 48"
TJ18B	18" DCA series double flight Twisted J Auger	18" x 48"
TJ24B	24" DCA series double flight Twisted J Auger	24" x 48"
TJ30B	30" DCA series double flight Twisted J Auger	30" x 48"
TJ36B	36" DCA series double flight Twisted J Auger	36" x 48"



2-9/16" Round Hub



# TWISTED J AUGERS

## 2" Hex Hub

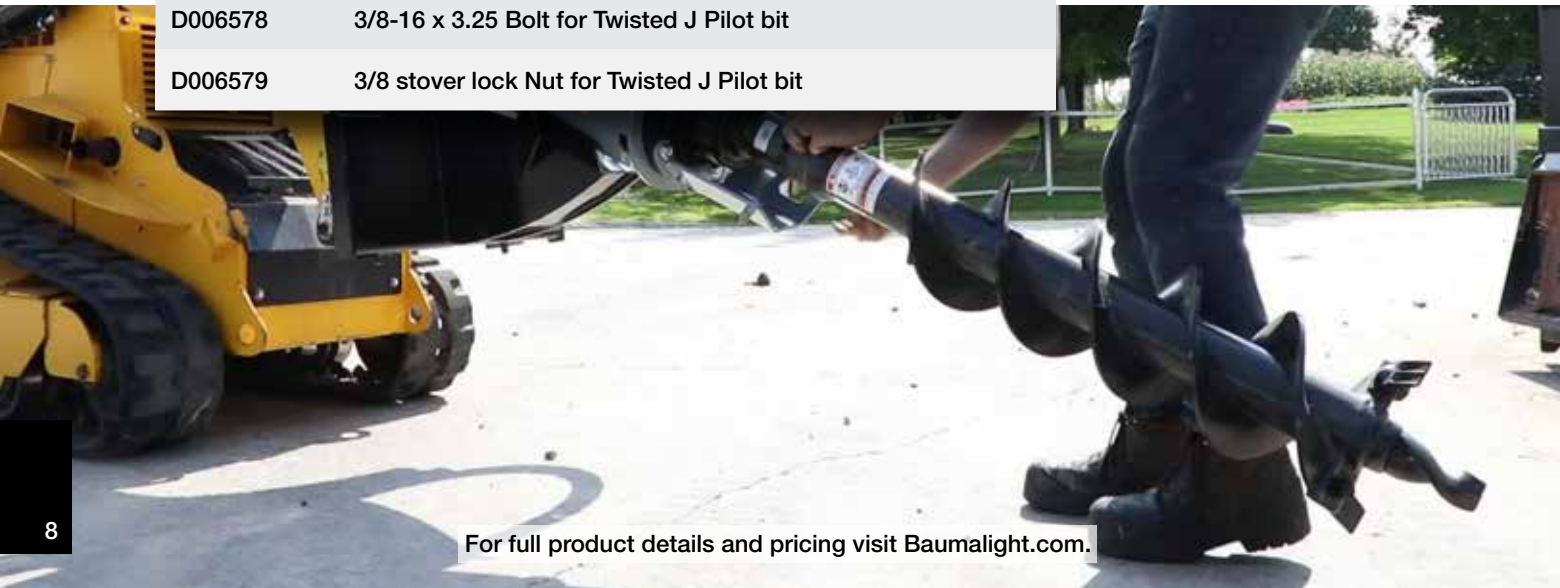
2"Hex Hub	Description	Dimensions
TJ04H	4.5" SDA series single flight Twisted J Auger	4.5" x 48"
TJ06H	6" DCA series double flight Twisted J Auger	6" x 48"
TJ09H	9" DCA series double flight Twisted J Auger	9" x 48"
TJ12H	12" DCA series double flight Twisted J Auger	12" x 48"
TJ15H	15" DCA series double flight Twisted J Auger	15" x 48"
TJ18H	18" DCA series double flight Twisted J Auger	18" x 48"
TJ24H	24" DCA series double flight Twisted J Auger	24" x 48"
TJ30H	30" DCA series double flight Twisted J Auger	30" x 48"
TJ36H	36" DCA series double flight Twisted J Auger	36" x 48"



2-9/16" Round Hub

## Service Parts

Service Parts	Description
D006570	Standard Bolt-on dirt tooth for DCA series Twisted J Augers
D006574	SB35-SQ Pilot bit for DCA Series Twisted J Auger
D006575	SB45-SQ Pilot bit for DCA Series Twisted J Auger
D006576	5/8-11 Stover lock for Twisted J Dirt tooth
D006577	5/8 X 1 1/2 carriage Bolt for Twisted J Dirt tooth
D006578	3/8-16 x 3.25 Bolt for Twisted J Pilot bit
D006579	3/8 stover lock Nut for Twisted J Pilot bit





## CHEATER ADAPTERS

### 2" ROUND ADAPTERS

**D001286**

2" Round FM to 2-9/16" Round Male Adapter - 15 lbs



**D001287**

2" Round FM to 2-9/16" Round Male Brushing - 2 lbs



**D001319**

2" Round FM to 2" Hex Male Adapter - 17 lbs



### 2" HEX ADAPTERS

**D001280**

2" Hex FM to 2" Round Male Adapter - 17 lbs



**D001310**

2" Hex FM to 2-9/16" Round Male Adapter - 17 lbs



### 2-9/16" ROUND ADAPTERS

**D001279**

2-9/16" Round FM to 2" Round Male Adapter - 18 lbs



**D001318**

2-9/16" Round FM to 2" Hex Male Adapter - 17 lbs



### 2" HEX WELD-ON HUB

**D004335**

2" Hex weld-on hub bushing with OD step and 2" ID - 1.42 lbs



## BIT EXTENSIONS



**D001381**

2" Round M2F  
24" Length



**D001382**

2" Round M2F  
48" Length



**D001384**

2-9/16" Round M2F  
24" Length



**D001385**

2-9/16" Round M2F  
48" Length



**D001734**

2" Hex M2F  
24" Length  
Full Length



**D001735**

2" Hex M2F  
48" Length  
Full Length



**D001549**

2" Hex M2F  
24" Length  
Adjustable

### Fastener for 2" Round Extensions



**D001918**

1/2x3.75 Bolt 2" Round  
Auger Bit Extension



**D001919**

1/2 Nylon  
Insert Locknut



**D001920**

7/8 x 5.5 Bolt 2-9/16"  
Round Auger Bit Extension



**D001921**

7/8 Nylon  
Insert Locknut



**D002008**

3/4 Pin 2" Hex Auger Bit  
Extension



**S1014**

2" Hex Linch Pin

# BOOM MOWERS

# BOOM MOWERS

for Skidsteers





# BOOM MOWERS



## SWA540

6 ft Total Reach  
48" Cutting Width  
Single Arm  
Flail Blades



## SWA550

7ft Total Reach  
60" Cutting Width  
Single Arm  
Flail Blades



## SWA560

10 ft Total Reach  
60" Cutting Width  
Single Arm  
Flail Blades



## SWF560

10 ft Total Reach  
48" Cutting Width  
Boom & Stick  
Flail Blades



## SWF580

14 ft Total Reach  
48" Cutting Width  
Boom & Stick  
Flail Blades



## SWA750

14 ft Total Reach  
42" Cutting Width  
Single Arm  
Rotary Cutter



For full product details and pricing visit [Baumalight.com](http://Baumalight.com).





# BRUSH MULCHERS



**FOR FULL PRODUCT DETAILS, PRICING, PRODUCT VIDEOS, SUPPORT AND TO FIND A DEALER, VISIT [BAUMALIGHT.COM](http://BAUMALIGHT.COM)**





## MP348

60" Path Width  
48" Rotor Width  
25 HP Engine Minimum  
(50 HP Maximum)  
40 HP PTO Maximum  
CAT 1 3PH



## MP360

72" Path Width  
60" Rotor Width  
30 HP Engine Minimum  
(55 HP Maximum)  
45 HP PTO Maximum  
CAT 1 3PH



## MP560

75" Path Width  
60" Rotor Width  
45 HP Engine Minimum  
(75 HP Maximum)  
65 HP PTO Maximum  
CAT 2 3PH



## MP572

87" Path Width  
72" Rotor Width  
50 HP Engine Minimum  
(125 HP Maximum)  
115 HP PTO Maximum  
CAT 2 3PH



## MP972

84" Path Width  
72" Rotor Width  
90 HP Engine Minimum  
(135 HP Maximum)  
125 HP PTO Maximum  
CAT 2 or 3 3PH



# SKIDSTEER MODELS



## MS348

60" Path Width  
48" Rotor Width  
3000lb min carrier weight



## MS530M

42" Path Width  
30" Rotor Width  
2000lb min carrier weight



## MS548

62" Path Width  
48" Rotor Width  
4000lb min carrier weight



## MS560

75" Path Width  
60" Rotor Width  
5500lb min carrier weight



## MS572

87" Path Width  
72" Rotor Width  
6000lb min carrier weight



## MS960

75" Path Width  
60" Rotor Width  
7000lb min carrier weight



## MS972

84" Path Width  
72" Rotor Width  
7500lb min carrier weight



## MS1160

75" Path Width  
60" Rotor Width  
7000lb min carrier weight







## MX230

38" Path Width  
30" Rotor Width  
6 Ton Maximum carrier weight  
2 Ton Maximum carrier weight



## MX330

38" Path Width  
30" Rotor Width  
8 Ton Maximum carrier weight  
3 Ton Maximum carrier weight



## MX530

40" Path Width  
30" Rotor Width  
12 Ton Maximum carrier weight  
4 Ton Maximum carrier weight



## MX548R with root Rake

62" Path Width  
48" Rotor Width  
20 Ton Maximum carrier weight  
8 Ton Maximum carrier weight



## MX948R

70" Path Width  
48" Rotor Width  
30 Ton Maximum carrier weight  
12 Ton Maximum carrier weight



## MX960R

90" Path Width  
60" Rotor Width  
33 Ton Maximum carrier weight  
18 Ton Maximum carrier weight



## MX1148R

70" Path Width  
48" Rotor Width  
30 Ton Maximum carrier weight



## MX1160R

90" Path Width  
60" Rotor Width  
33 Ton Maximum carrier weight  
18 Ton Maximum carrier weight



# CHEATER ADAPTORS

# CHEATER ADAPTOR

**Make mini skidsteer attachments compatible with a range of equipment, offering greater flexibility and functionality for your operations**







## D006290

Bobcat Mini FM to Baualight Male cheater adaptor  
Vertical adjustment: Yes



## D006489

Baualight FM plate to Bobcat Mini Male cheater adaptor  
Vertical adjustment: Yes



## BALL HITCH

Mini skidsteer plate with 2x2" ball hitch receiver.  
2x2 short tongue with 2-5/16" ball  
Check website for weight classes



## D006942

Universal Skidsteer FM to Baualight Mini Male cheater adaptor  
Vertical adjustment: Yes



## D007048

ASV RT40 FM to Baualight Mini Male cheater adaptor  
Vertical adjustment: Yes



## XQS2M

Dipper Buddy Excavator to Baualight mini skidsteer.  
AO2 connection type  
For excavator class 5 & 8, up to 9 ton



## XQS3B

Dipper Buddy Excavator to Bobcat mini skidsteer  
AO2 connection type  
For excavator class 5 & 8



## XQS10

Dipper Buddy Excavator to Skidsteer  
For excavator class 10, up to 11 ton.



## XQS20

Dipper Buddy Excavator to Skidsteer Cheater Adaptor  
For excavator class 13 & 20, up to 22 ton.



## D007566

ASV RT40 FM to Bobcat Mini-Male cheater adaptor

DUMPERS

# DUMPERS

**Move heavy loads and tough materials with ease.  
Manage tasks from small hauls to moving heavy, bulky  
materials smoothly.**







## DW51QT

Drive type: Pull  
Size: 18x8.50-10 6P  
Carriage: Tires  
Bucket control: Hydraulic AUX  
Bucket heaped capacity: 1.2 Yard

## DT515RH

Net Engine HP: 22.1 HP  
Engine Type: Gas  
Engine: Honda GX690  
Carriage: Tracks  
Drive type: Hydrostatic  
Travel Speed: 7.84 KM/h  
Bucket control: Lever  
Bucket heaped capacity: 0.9 Yard





FELLER BUNCHER

# FELLER BUNCHER







## **FBS752**

Fixed Horizontal Blade  
Universal Skidsteer Adaptor  
Requires Case Drain  
4 Edges Per Tooth  
52" Blade diameter  
20" Maximum cut



## **FGS952**

Fixed Horizontal Blade  
Universal Skidsteer Adaptor  
Requires Case Drain  
4 Edges Per Tooth  
52" Blade diameter  
20" Maximum cut

**FBXD752**  
Excavator Mounted  
360° Slew drive  
Bolt-on Adaptor Slew Drive  
Requires Case Drain  
4 Edges Per Tooth  
52" Blade diameter  
20" Maximum cut



**FLAIL MOWERS**

# FLAIL MOWERS

**For mini skidsteers, big skidsteers  
and tractors**





## FMP260

72" Path Width  
60" Rotor Width  
48 blade clusters  
19" Rotor diameter (tips)  
Quick Hitch compatible



## FMP780

88" Path Width  
80" Rotor Width  
42 blade clusters  
17.5" Rotor diameter (tips)  
Quick Hitch compatible

## FMM148

61" Path Width  
48" Rotor Width  
38 blade clusters  
19" Rotor diameter (tips)  
Universal mini skidsteer Adaptor



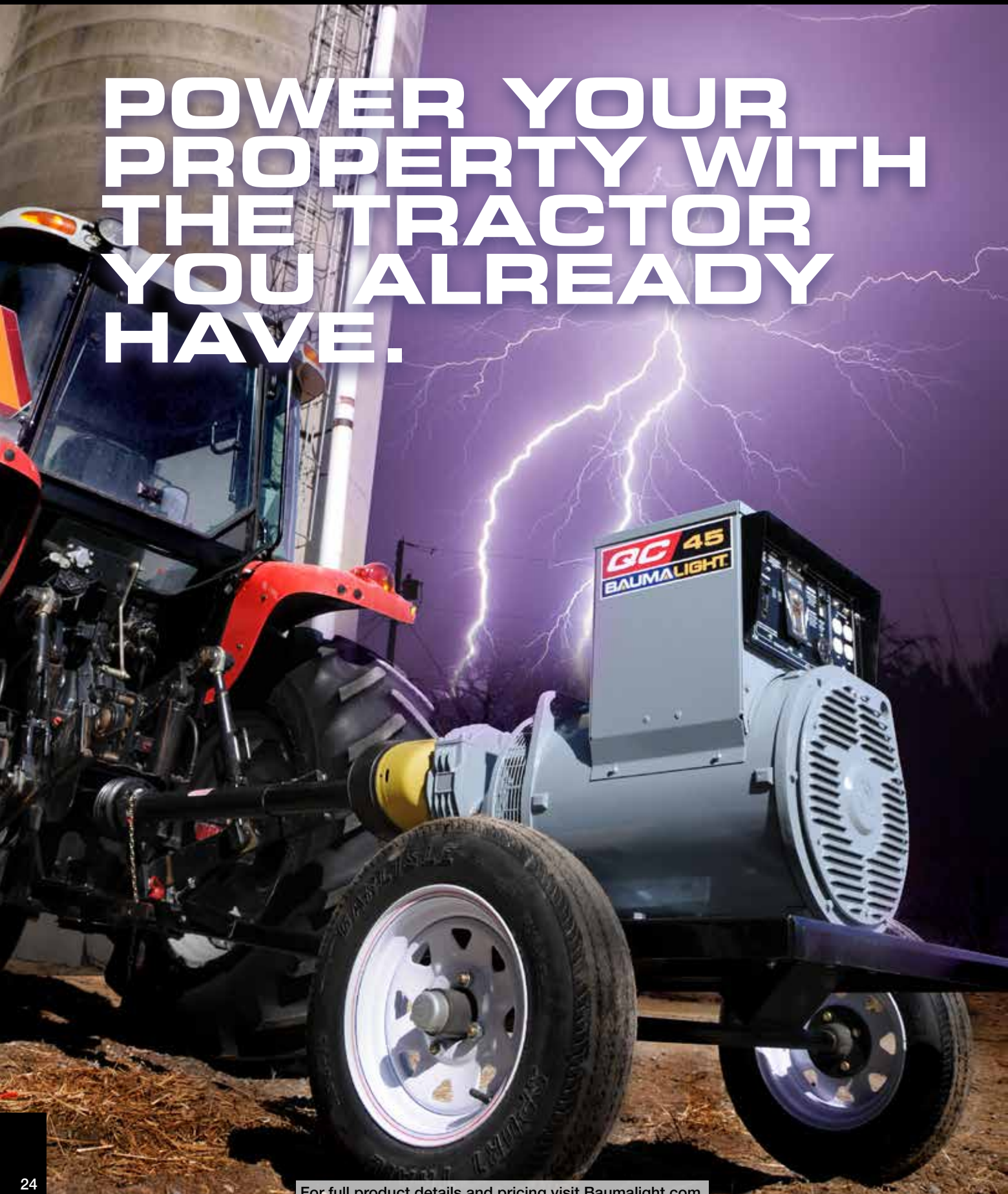
## FEB700

88" Path Width  
80" Rotor Width  
42 blade clusters  
17.5" Rotor diameter (tips)  
Standard skidsteer plate



# GENERATORS

**POWER YOUR  
PROPERTY WITH  
THE TRACTOR  
YOU ALREADY  
HAVE.**







## TX7

7 KW  
14 KW momentary surge  
11 HP 100% Load  
30 Amps Full Output



## TX12

12 KW  
24 KW momentary surge  
21 HP 100% Load  
50 Amps Full Output



## TX18

18 KW  
37 KW momentary surge  
34 HP 100% Load  
80 Amps Full Output



## TX25

25 KW  
50 KW momentary surge  
42 HP 100% Load  
100 Amps Full Output



## TX31

31 KW  
62 KW momentary surge  
50 HP 100% Load  
125 Amps Full Output





# GENERATORS - KR







## KR30

30 KW  
85 KW momentary surge  
45 HP 100% Load  
125 Amps Full Output



## KR44

44 KW  
115 KW momentary surge  
65 HP 100% Load  
175 Amps Full Output



## KR52

52 KW  
140 KW momentary surge  
76 HP 100% Load  
225 Amps Full Output



## KR65

65 KW  
100 KW momentary surge  
97 HP 100% Load  
250 Amps Full Output









## 120/240 SINGLE PHASE

Model No.	QC 12	QC 19	QC 30	QC 45	QC 55	QC 65	QC 80	QC 100
KW	12	19	30	45	55	65	80	100
Momentary Surge KW	25	35	85	120	150	180	225	300
100% Load	21HP	34HP	49HP	75HP	89HP	102HP	122HP	153HP
Full Output Amps	50	90	125	175	225	250	320	400

## 120/208 VOLT 3-PHASE

Model No.	QC 30-2	QC 45-2	QC 68-2	QC 105-2
KW	30	45	68	105
Momentary Surge KW	85	120	190	315
100% Load	49HP	75HP	105HP	155HP
Full Output Amps	100	150	250	400

## 120/240 VOLT 3-PHASE

Model No.	QC 30-3	QC 45-3	QC 68-3	QC 105-3
KW	30	45	68	105
Momentary Surge KW	85	120	190	315
100% Load	49HP	75HP	105HP	155HP
Full Output Amps	90	150	225	320

## 480 VOLT 3-PHASE

Model No.	QC 30-4	QC 45-4	QC 68-4	QC 105-4
KW	33	50	76	113
Momentary Surge KW	85	120	190	315
100% Load	49HP	75HP	105HP	155HP
Full Output Amps	50	70	125	150

## 600 VOLT 3-PHASE

Model No.	QC 27-6	QC 50-6	QC 75-6	QC 100-6
KW	27	50	75	100
Momentary Surge KW	45	130	200	300
100% Load	47HP	80HP	110HP	153HP
Full Output Amps	35	60	90	150

# MINI SKIDSTEERS

## INTRODUCING THE BRAND NEW **2-SPEED** MINI SKIDSTEER



When the job requires less torque and more speed, easily shift from low gear to high gear





## WRL58G

Net Engine HP: 22.1 HP  
Carriage: Tires  
Engine Type: Gas  
Engine Brand: Honda  
Model: GX690  
Travel Speed: 7.84 km/h  
Width (without bucket): 38"  
tipping capacity with weights: 1550



## TRL536D

Net Engine HP: 23.9 HP  
Engine Type: Diesel  
Engine Brand: Kubota  
Model: D1105  
Travel Speed: 8.8 km/h  
Width (without bucket): 35.5"  
tipping capacity with weights: 2760



## TRL630D

Net Engine HP: 23.9 HP  
Engine Type: Diesel  
Engine Brand: Kubota  
Model: D1105  
Travel Speed: 8.8 km/h  
Width (without bucket): 40"  
tipping capacity with weights: 4340



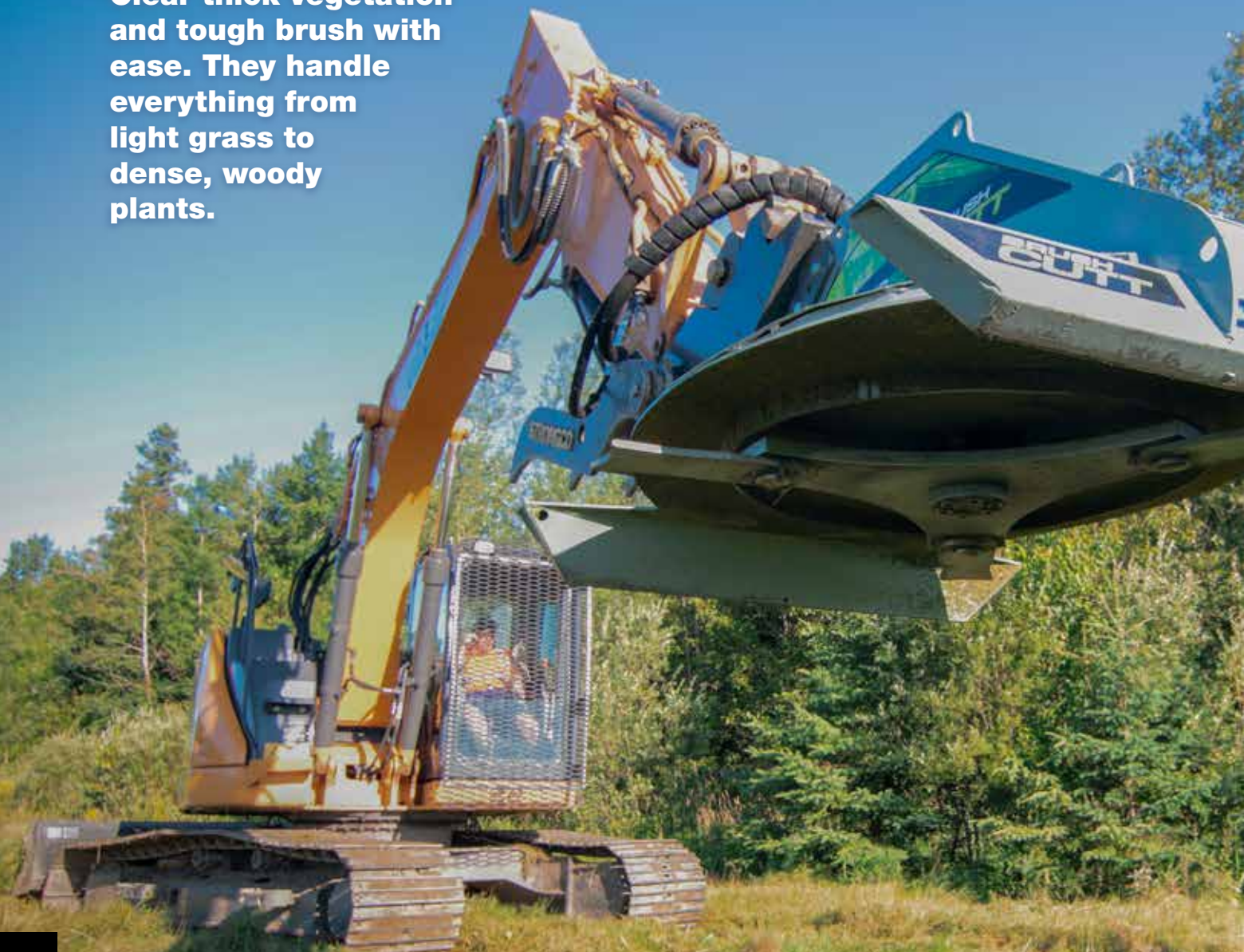
## TRL630Y

Net Engine HP: 22.8 HP  
Engine Type: Diesel  
Engine Brand: Yanmar  
Model: D1105  
Travel Speed: 8.8 km/h  
Width (without bucket): 40"  
tipping capacity with weights: 4340

ROTARY BRUSH CUTTER

# ROTARY BRUSH CUTTERS

Clear thick vegetation and tough brush with ease. They handle everything from light grass to dense, woody plants.





## TRACTOR MODELS



### **CP560**

70" Path Width  
60" Cutting Width  
52 Slashes per Second  
Max Engine HP: 75 HP  
2-Disk Clutch System  
Protection



### **CP572**

82" Path Width  
72" Cutting Width  
52 Slashes per Second  
Max Engine HP: 85 HP  
4-Disk Clutch System  
Protection

## SKIDSTEER MODELS



### **CF360**

70" Path Width  
60" Cutting Width  
2 Blades  
Max Carrier weight: 8,000 lbs  
Built In Hydraulic System  
Protection



### **CF372**

82" Path Width  
72" Cutting Width  
2 Blades  
Max Carrier weight: 8,500 lbs  
Built In Hydraulic System  
Protection



### **CF560**

70" Path Width  
60" Cutting Width  
4 Blades  
Max Carrier weight: 10,500 lbs  
Built In Hydraulic System  
Protection



### **CF572**

82" Path Width  
72" Cutting Width  
4 Blades  
Max Carrier weight: 12,000 lbs  
Built In Hydraulic System  
Protection



### **CF772**

83" Path Width  
72" Cutting Width  
4 Blades  
Max Carrier weight: 10,000 lbs  
Built In Hydraulic System  
Protection



# ROTARY BRUSH CUTTER

## EXCAVATOR MODELS



### **CXC530**

3.5" Maximum Brush Size  
40" Path Width  
30" Cutting Width  
3 Blades  
Max Tracked Excavator Ton: 10  
Max Wheeled Excavator Ton: 11



### **CXC542**

5" Maximum Brush Size  
50" Path Width  
42" Cutting Width  
3 Blades  
Max Tracked Excavator Ton: 15  
Max Wheeled Excavator Ton: 17



### **CXC550**

6" Maximum Brush Size  
67" Path Width  
50" Cutting Width  
3 Blades  
Max Tracked Excavator Ton: 20  
Max Wheeled Excavator Ton: 24





# ROTARY BRUSH CUTTER





# SCREW SPLITTERS

# SCREW SPLITTERS & STUMP PLANERS



# SCREW SPLITTERS



## RSS380

Skidsteer Mount  
 Carrier weight for planer: 5000lbs (Max)  
 Carrier weight for splitter: 7000lbs (Max)  
 Max GPM: 45  
 Max PSI: 3500  
 2" Hex Planetary Drive



## RSS580

Skidsteer Mount  
 Carrier weight for planer: 6000lbs (Max)  
 Carrier weight for splitter: 7000lbs (Max)  
 Max GPM: 45  
 Max PSI: 3500  
 2" Hex Planetary Drive



## RSS780

Skidsteer Mount  
 Carrier weight for planer: 10000lbs (Max)  
 Carrier weight for splitter: 12000lbs (Max)  
 Max GPM: 65  
 Max PSI: 5000  
 8 Bolt Flange Planetary Drive



## RSX380

Excavator Mount  
 Carrier weight for planer: 5 Ton (Max)  
 Carrier weight for splitter: 10 Ton (Max)  
 Max GPM: 45  
 Max PSI: 3500  
 2" Hex Planetary Drive



## RSX580

Excavator Mount  
 Carrier weight for planer: 8 Ton (Max)  
 Carrier weight for splitter: 10 Ton (Max)  
 Max GPM: 45  
 Max PSI: 3500  
 2" Hex Planetary Drive



## RSX780

Excavator Mount  
 Carrier weight for planer: 18 Ton (Max)  
 Carrier weight for splitter: 20 Ton (Max)  
 Max GPM: 65  
 Max PSI: 5000  
 8 Bolt Flange Planetary Drive

## SCREW SPLITTER TOOLS



Part #	Description
D002507	Complete 2" Hex 14 x 8 splitter cone assembly
D003935	Complete 8-bolt flange mount 14 x 8 splitter cone assembly

## STUMP PLANER TOOLS



Part #	Description
D003218	2" Hex x 8" Christmas Tree Stump remover
D002771	2" Hex 20" dia. 4-knife stump planer
D003381	8-bolt flange mount stump planer

# STUMP GRINDERS

# STUMP GRINDER





## TRACTOR MOUNT MODELS

### D005735 EXTENSION KIT



The extension brackets attach to the 1P24's 3PH mounting bracket.

The extension brackets allow you to increase the installed length of the PTO shaft and maximize shaft overlay through the 3PH range of movement.

Learn more about the dimension measurement by going to [www.baumalight.com/product/extension-kit-en](http://www.baumalight.com/product/extension-kit-en)

or scan the QR code below



### 1P24

Recommended HP: 20-45  
 Max Engine HP: 50  
 Max PTO HP: 40  
 Number of teeth: 34  
 Cutting Wheel Speed: 540 RPM  
 Hub Torque: 885 ft-Lbs



### 3P24

Recommended HP: 25-55  
 Max Engine HP: 58  
 Max PTO HP: 50  
 Number of teeth: 34  
 Cutting Wheel Speed: 810 RPM  
 Hub Torque: 885 ft-Lbs



### 3P34

Recommended HP: 45-80  
 Max Engine HP: 85  
 Max PTO HP: 75  
 Number of teeth: 52  
 Cutting Wheel Speed: 810 RPM  
 Hub Torque: 1475 ft-Lbs



### 3P40

Recommended HP: 60-120  
 Max Engine HP: 125  
 Max PTO HP: 115  
 Number of teeth: 52  
 Cutting Wheel Speed: 1000 RPM  
 Hub Torque: 1327 ft-Lbs



# STUMP GRINDERS

## **MINI SKIDSTEER MOUNT MODELS**



### **S14**

Motor Type: Gerotor  
Rotor Size: 18"  
Number of Teeth: 12  
Cutting Depth: 6"  
Self-feeding Swing Arc  
Hitch: 1" pivot pins



### **S16**

Motor Type: Bent Axis Piston  
Rotor Size: 18"  
Number of Teeth: 24  
Cutting Depth: 6"  
12V DC powered 56° Swing Arc  
Hitch: Mini Plate

## **SKIDSTEER MOUNT MODELS**



### **S18**

Recommended HP: 25-80  
Motor Type: Gerotor  
Number of Teeth: 34  
Cutting Depth: 10"  
Self-feeding Swing Arc  
Hitch: 1" pivot pins



### **S22**

Recommended HP: 25-65  
Motor Type: Gerotor  
Number of Teeth: 34  
Cutting Depth: 10"  
12V DC powered 60° Swing Arc  
Hitch: Quick Attach



### **S24**

Recommended HP: 30-80  
Motor Type: Gerotor  
Number of Teeth: 34  
Cutting Depth: 10"  
Hydraulic 60° Swing Arc  
Hitch: Quick Attach



### **S28**

Recommended HP: 50-120  
Motor Type: Gerotor  
Number of Teeth: 34  
Cutting Depth: 10"  
Hydraulic 63° Swing Arc  
Hitch: Quick Attach



### **S40**

Recommended HP: 50-120  
Motor Type: Bent Axis Piston  
Number of Teeth: 12  
Cutting Depth: 24"  
Hydraulic 85° Swing Arc  
Hitch: Quick Attach



## EXCAVATOR MOUNT MODELS



### **S14**

Carrier Size: 1-2 ton  
Gerotor Motor  
Rotor Size: 18"  
Number of Teeth: 12  
Cutting Depth: 6"  
Hitch: 1" pivot pins



### **S18**

Carrier Size: 1.5-4 ton  
Gerotor Motor  
Rotor Size: 24"  
Number of Teeth: 34  
Cutting Depth: 10"  
Hitch: 1" pivot pins



### **GXM350**

Carrier Size: 1.5-4.5 ton  
High efficiency bent axis piston  
Rotor Size: 19"  
Number of Teeth: 24  
Cutting Depth: 16"  
Hitch: Bolt on



### **GXM550**

Carrier Size: 3.5-8 ton  
High efficiency bent axis piston  
Rotor Size: 24"  
Number of Teeth: 12  
Cutting Depth: 24"  
Hitch: Bolt on



### **GXM750**

Carrier Size: 7-18 ton  
High efficiency bent axis piston  
Rotor Size: 24"  
Number of Teeth: 12  
Cutting Depth: 24"  
Hitch: Bolt on



# TREE SHEARS & PULLER

# CUT YOUR WORKLOAD NOT CORNERS

**Powerful and precise cutting solutions for  
tree clearing and trimming.  
Built for durability, they handle tough  
branches with ease.**





# TREE SHEARS & PULLER



## ISH510G

Horizontal Blade Angle  
4,000–7,000 Weight Class  
10" Limb Size  
Grabber: Yes  
Carrier: Skidsteer



## ISH512G

Horizontal Blade Angle  
5,000–8,000 Weight Class  
12" Limb Size  
Grabber: Yes  
Carrier: Skidsteer



## ISH712G

Horizontal Blade Angle  
6,000–12,000 Weight Class  
12" Limb Size  
Grabber: Yes  
Carrier: Skidsteer



## ISR512

Rotating Blade Angle  
5,000–8,000 Weight Class  
12" Limb Size  
Carrier: Skidsteer



## IXP508G

Pivoting Blade Angle  
3–10 ton Weight Class  
8" Limb Size  
5–40 GPM  
Carrier: Excavator



## IXP510G

Pivoting Blade Angle  
5–15 ton Weight Class  
10" Limb Size  
10–40 GPM  
Carrier: Excavator



## IXP512G

Pivoting Blade Angle  
8–20 ton Weight Class  
12" Limb Size  
15–60 GPM  
Carrier: Excavator



## ISH3M

TREE PULLER  
Carrier: Mini Skidsteer  
2" Limb Size  
1,500 - 4,000 lbs skidsteer  
size range



## ISH3P

TREE PULLER  
Carrier: Skidsteer  
4" Limb Size  
4,000 - 8,000 lbs skidsteer  
size range



# TREE SHEARS



## **ISH918G**

TREE SHEAR  
Carrier: Skidsteer  
18" Limb Size  
25-70 GPM  
6,000-18,000 lbs skidsteer  
size range



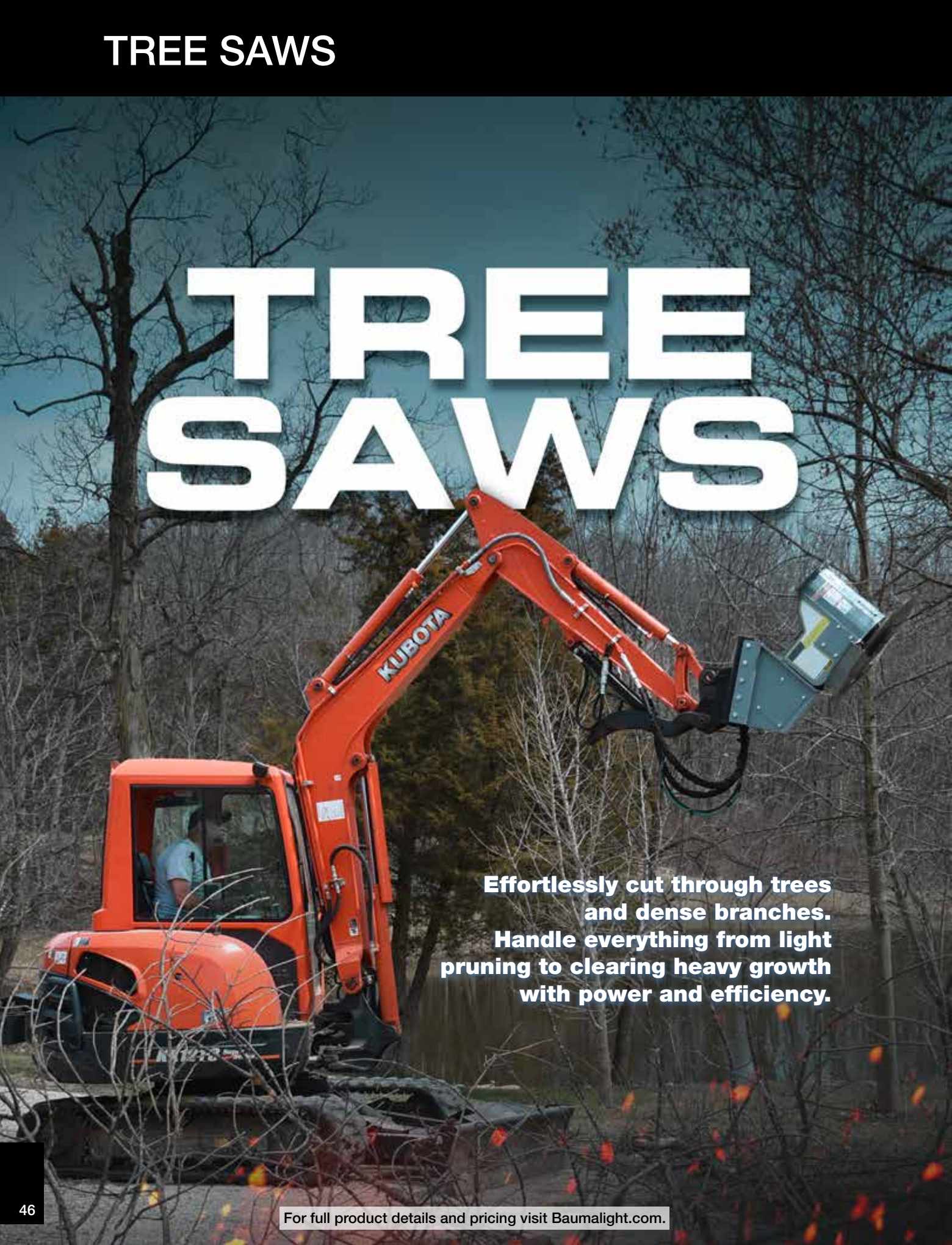






# TREE SAWS

# TREE SAWS

A Kubota excavator, painted in its signature orange, is shown in a wooded setting. The excavator's arm is extended upwards, holding a large, grey tree saw attachment. The saw is positioned to cut through a tree. The background consists of bare trees, suggesting a late autumn or winter scene. The overall lighting is somewhat dim, with a blueish tint to the sky and trees.

**Effortlessly cut through trees  
and dense branches.  
Handle everything from light  
pruning to clearing heavy growth  
with power and efficiency.**





## DPH530

Mount: Tractor  
 Blade Angle: Horizontal  
 Blade Diameter: 30"  
 Max Cut: 10"  
 Blade Material: AR400  
 Teeth: High Speed Teeth



## DPH735

Mount: Tractor  
 Blade Angle: Horizontal  
 Blade Diameter: 35"  
 Max Cut: 12"  
 Blade Material: Steel  
 Teeth: Beaver Teeth



## DSM230

Adaptor: Mini Skidsteer  
 Blade Angle: 180°  
 Actuator: Manual  
 GPM: 6-20  
 Blade Diameter: 30"  
 Teeth: High Speed Teeth



## DSM530

Adaptor: Universal Skidsteer  
 Blade Angle: 180°  
 Actuator: Manual  
 GPM: 10-40  
 Blade Diameter: 30"  
 Teeth: High Speed Teeth



## DSA530

Adaptor: Universal Skidsteer  
 Blade Angle: 180°  
 Actuator: Helical  
 GPM: 10-45  
 Blade Diameter: 30"  
 Teeth: High Speed Teeth



## DXM530

Adaptor: Excavator Bolt-on  
 Maximum Carrier Ton: 12 ton  
 Blade Angle: 180°  
 GPM: 10-40  
 Blade Diameter: 30"  
 Teeth: High Speed Teeth



## DXA530

Adaptor: Excavator Bolt-on  
 Maximum Carrier Ton: 12 ton  
 Blade Angle: 180°  
 GPM: 10-45  
 Blade Diameter: 30"  
 Teeth: High Speed Teeth



## DXD752

Adaptor: Excavator Bolt-on  
 Maximum Carrier Ton: 22 ton  
 Blade Angle: 360°  
 GPM: 25-60  
 Blade Diameter: 52"  
 Type of Teeth: Beaver



## DXH752

Adaptor: Excavator Bolt-on  
 Maximum Carrier Ton: 22 ton  
 Blade Angle: Horizontal  
 GPM: 25-60  
 Blade Diameter: 52"  
 Type of Teeth: Beaver

TREE SPADES

# TREE SPADES

## SKIDSTEER SCOOPS







## X4M

Tree Size (Evergreen): 1.5"  
 Tree Size (Hardwood): 1"  
 Root Ball Diameter: 22"  
 Root Ball Depth: 20"  
 Blade Thickness: 1/4" High Alloy  
 Blade Truncation: Sharp  
 Attachment: Standard Mini Skidsteer  
 Width - Scoop (Plate): 23" (24")  
 Length: 35"



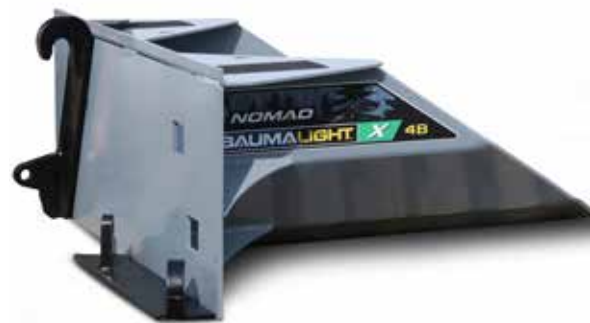
## X4C

Tree Size (Evergreen): 1.5"  
 Tree Size (Hardwood): 1"  
 Root Ball Diameter: 22"  
 Root Ball Depth: 20"  
 Blade Thickness: 1/4" High Alloy  
 Blade Truncation: Sharp  
 Attachment: Bobcat Mini Skidsteer  
 Width - Scoop (Plate): 23" (36")  
 Length: 36"



## X4S

Tree Size (Evergreen): 2"  
 Tree Size (Hardwood): 1.5"  
 Root Ball Diameter: 28"  
 Root Ball Depth: 25"  
 Blade Thickness: 1/4" High Alloy  
 Blade Truncation: Sharp  
 Attachment: Standard Universal  
 Width - Scoop (Plate): 28" (44")  
 Length: 43"



## X4B

Tree Size (Evergreen): 2"  
 Tree Size (Hardwood): 1.5"  
 Root Ball Diameter: 28"  
 Root Ball Depth: 25"  
 Blade Thickness: 1/4" High Alloy  
 Blade Truncation: Sharp  
 Attachment: Blank Weld-On  
 Width - Scoop (Plate): 28" (44")  
 Length: 43"

# TREE SPADES

## SKIDSTEER & INDUSTRIAL







## ST324

Root Ball Diameter: 24"  
 Root Ball Depth: 23"  
 Opening (Width): 20"  
 Number of Blades: 3  
 Blade Thickness: 1/4" Mild Steel  
 Hydraulic Flow: 5-20 GPM



## ST330

Root Ball Diameter: 30"  
 Root Ball Depth: 29"  
 Opening (Width): 23"  
 Number of Blades: 3  
 Blade Thickness: 3/8" Mild Steel  
 Hydraulic Flow: 5-20 GPM



## SS330

Root Ball Diameter: 30"  
 Root Ball Depth: 29"  
 Opening (Width): 60"  
 Number of Blades: 3  
 Blade Thickness: 3/8" Mild Steel  
 Hydraulic Flow: 5-20 GPM



## ST440

Root Ball Diameter: 40"  
 Root Ball Depth: 30"  
 Opening (Width): 52"  
 Number of Blades: 4  
 Blade Thickness: 1/4" AR400  
 Hydraulic Flow: 5-20 GPM



## ST650

Root Ball Diameter: 50"  
 Root Ball Depth: 43"  
 Opening (Width): 47"  
 Number of Blades: 6  
 Blade Thickness: 1/4" AR400  
 Hydraulic Flow: 5-20 GPM



## DR434

Root Ball Diameter: 34"  
 Root Ball Depth: 23"  
 Opening (Width): 10"  
 Number of Blades: 4  
 Blade Thickness: 5/16" T1  
 Hydraulic Flow: 5-25 GPM



## DR438

Root Ball Diameter: 38"  
 Root Ball Depth: 27"  
 Opening (Width): 17"  
 Number of Blades: 4  
 Blade Thickness: 5/16" T1  
 Hydraulic Flow: 5-25 GPM



## DR444

Root Ball Diameter: 44"  
 Root Ball Depth: 31"  
 Opening (Width): 27"  
 Number of Blades: 4  
 Blade Thickness: 5/16" T1  
 Hydraulic Flow: 5-25 GPM



## DR448

Root Ball Diameter: 48"  
 Root Ball Depth: 38"  
 Opening (Width): 30"  
 Number of Blades: 4  
 Blade Thickness: 5/16" T1  
 Hydraulic Flow: 10-35 GPM

TREE SPADES

# TREE SPADES

## TRACTORS & TRAILERS







## PT324

Root Ball Diameter: 24"  
 Root Ball Depth: 23"  
 Opening (Width): 20"  
 Number of Blades: 3  
 Blade Thickness: 1/4" Mild Steel  
 Hydraulic Flow: 5-20 GPM



## PT330

Root Ball Diameter: 30"  
 Root Ball Depth: 29"  
 Opening (Width): 23"  
 Number of Blades: 3  
 Blade Thickness: 3/8" Mild Steel  
 Hydraulic Flow: 5-20 GPM



## PS330

Root Ball Diameter: 30"  
 Root Ball Depth: 29"  
 Opening (Width): 60"  
 Number of Blades: 3  
 Blade Thickness: 3/8" Mild Steel  
 Hydraulic Flow: 5-20 GPM



## PT440

Root Ball Diameter: 40"  
 Root Ball Depth: 30"  
 Opening (Width): 52"  
 Number of Blades: 4  
 Blade Thickness: 1/4" High Alloy  
 Hydraulic Flow: 5-20 GPM



## PT650

Root Ball Diameter: 50"  
 Root Ball Depth: 43"  
 Opening (Width): 47"  
 Number of Blades: 6  
 Blade Thickness: 1/4" High Alloy  
 Hydraulic Flow: 5-20 GPM



## TR330

Root Ball Diameter: 30"  
 Root Ball Depth: 29"  
 Opening (Width): 60"  
 Number of Blades: 3  
 Blade Thickness: 3/8" Mild Alloy



## TR440

Root Ball Diameter: 40"  
 Root Ball Depth: 30"  
 Opening (Width): 52"  
 Number of Blades: 4  
 Blade Thickness: 1/4" High Alloy



## TR650

Root Ball Diameter: 50"  
 Root Ball Depth: 43"  
 Opening (Width): 47"  
 Number of Blades: 6  
 Blade Thickness: 1/4" High Alloy



# TRENCHERS



# TRENCHERS





## TN236

Mount: Standard Mini skidsteer  
 Trench depth: 36"  
 Trench width: 4" to 6"  
 Trencher chain torque at 3,000 PSI: 6,703 lbs-in  
 Carrier weight (lb): 1,500 - 4,000  
 Max GPM: 18



## TNM336B

Mount: Bobcat Mini skidsteer  
 Trench depth: 36"  
 Trench width: 4" to 6"  
 Trencher chain torque at 3,000 PSI: 6,703 lbs-in  
 Carrier weight (lb): 1,500 - 4,000  
 Max GPM: 18



## TNS336

Mount: Universal skidsteer  
 Trench depth: 36"  
 Trench width: 4" to 6"  
 Trencher chain torque at 3,000 PSI: 14,571 lbs-in  
 Carrier weight (lb): 2,000 - 5,000  
 Max GPM: 20



## TN548

Mount: Universal skidsteer  
 Trench depth: 48"  
 Trench width: 6" to 10"  
 Trencher chain torque at 3,000 PSI: 21,856 lbs-in  
 Carrier weight (lb): 3,000 - 7,000  
 Max GPM: 25



## TN560

Mount: Universal skidsteer  
 Trench depth: 60"  
 Trench width: 6" to 10"  
 Trencher chain torque at 3,000 PSI: 21,856 lbs-in  
 Carrier weight (lb): 3,000 - 7,000  
 Max GPM: 25



## TN760

Mount: Universal skidsteer  
 Trench depth: 60"  
 Trench width: 6" to 10"  
 Trencher chain torque at 3,000 PSI: 33,877 lbs-in  
 Carrier weight (lb): 4,000 - 12,000  
 Max GPM: 42



# BAUMALIGHT™

## LIGHT INDUSTRIAL EQUIPMENT

AUGERS  
BOOM MOWERS  
BRUSH MULCHERS  
CHEATER ADAPTORS  
DUMPER  
EXCAVATOR ADAPTORS  
FELLER BUNCHER  
FLAIL MOWER  
GENERATORS  
MINI SKIDSTEERS

ROTARY BRUSH CUTTER  
SCREW SPLITTERS  
STUMP GRINDERS  
STUMP PLANERS  
TREE PULLER  
TREE SAWS  
TREE SHEARS  
TREE SPADES  
TRENCHERS



SOLD BY

EQUIPMENT DEALERS

FOR LOCAL SUPPORT

Most Tractor, Skidsteer or Excavator dealerships have access to the full line of Baumalight attachments.

Buy local through your Trusted Dealer for after-sales service, maintenance and product warranty.

### BAUMALIGHT™

Manufactured by: MTB MFG. INC.

4575 Powell Rd. Wallenstein, ON.  
Canada, N0B 2S0

[sales@baumalight.com](mailto:sales@baumalight.com)

[baumalight.com](http://baumalight.com)